

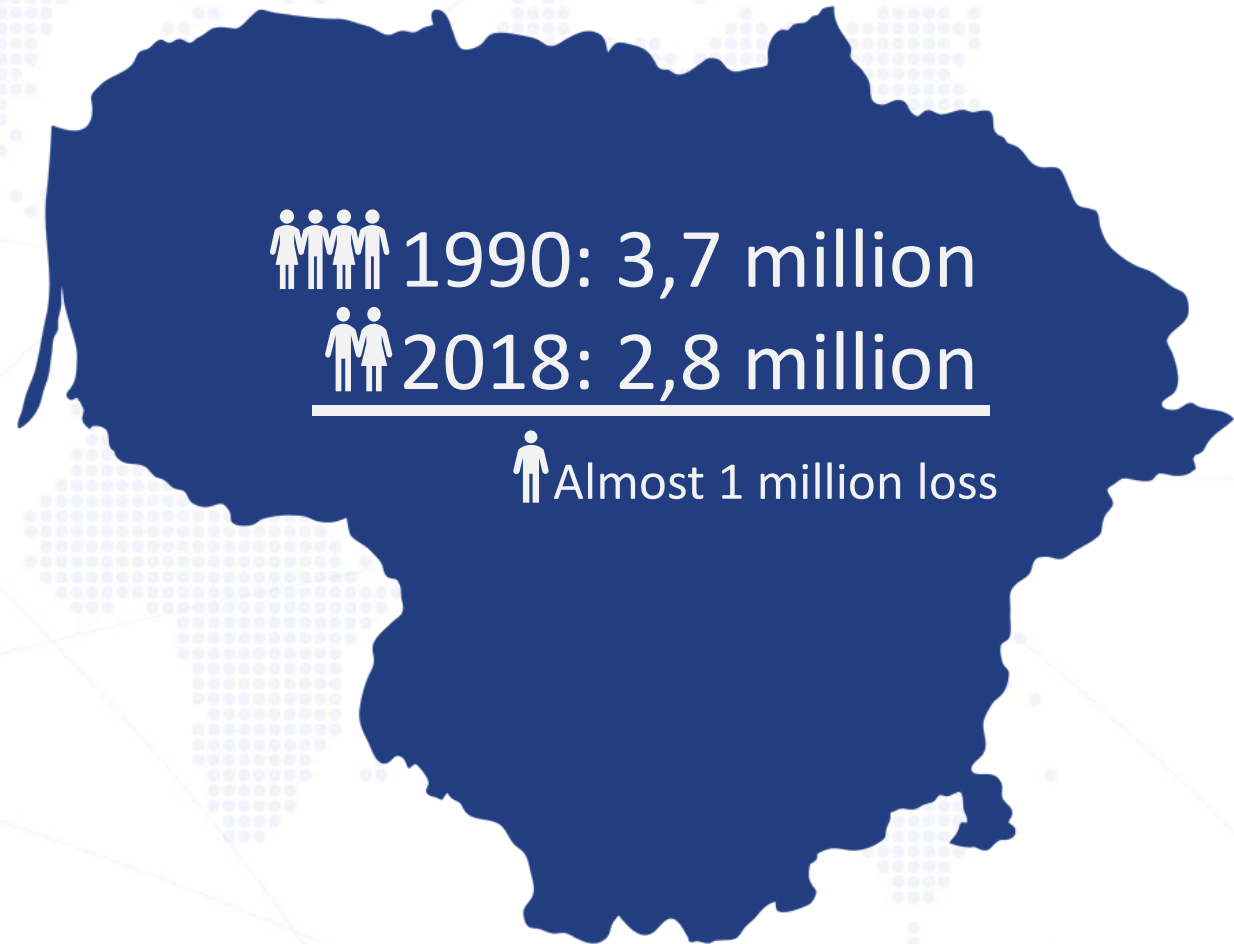
Migration information Center *I Choose Lithuania*



renkuosi
lietuva,

Lithuania:

- Emigration and net migration rates highest in Europe;
- Population decrease – 80% due to emigration;
- 1,3 million Lithuanians are estimated to be living abroad. Including diaspora second+ generation – much more
- Government priority Nr. 1 : Reduce emigration and promote return migration

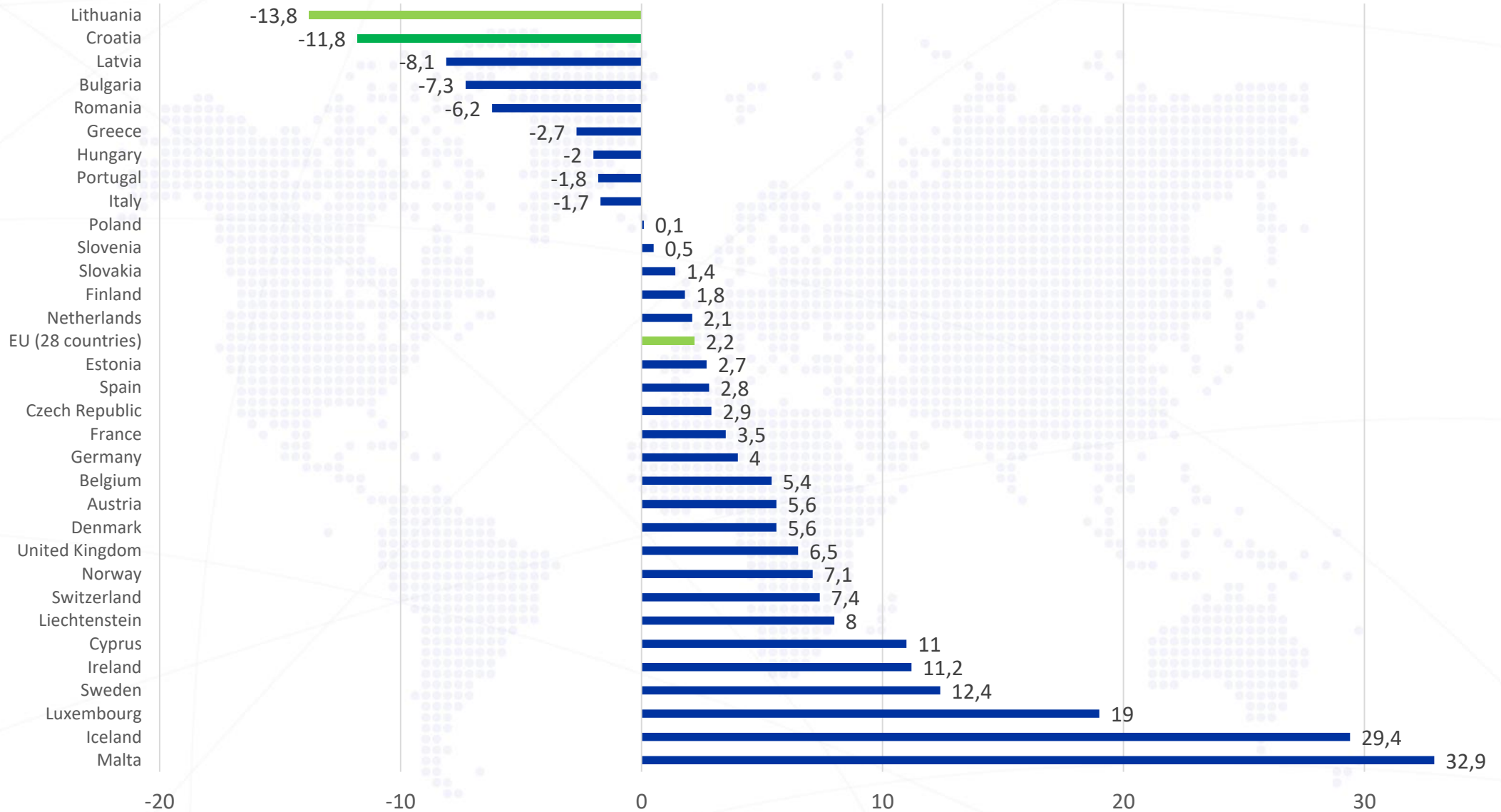


renkuosi
lietuva



IOM UN
MIGRATION

Net-migration rate/ per 1000 (2017)



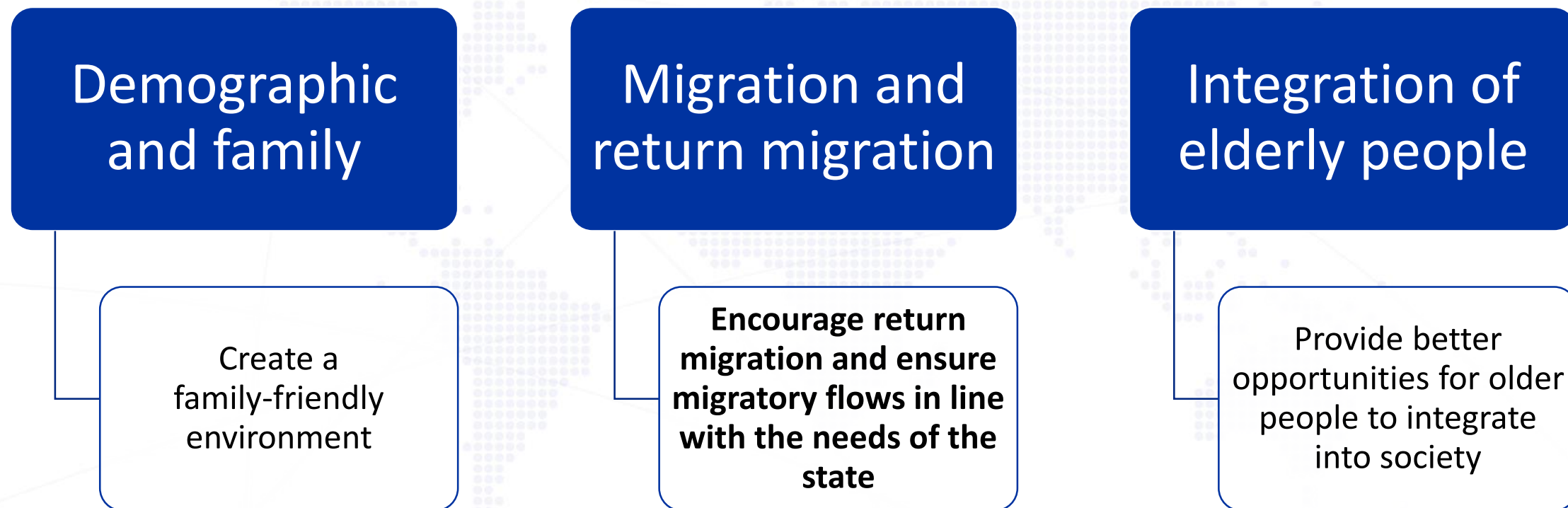
renkuosi
lietuva



IOM UN
MIGRATION

Government of Lithuania.

Demographic, Migration and Integration strategy 2018-2030



Migration

Encourage return migration and ensure migratory flows in line with the needs of the state

Encourage return migration and proportionate foreign nationals' immigration meeting the interests of the state

Prevents emigration

To strengthen the economic well-being of Lithuanian people

To strengthen the social security of Lithuanian residents and their psychological (emotional) well-being

Strengthen Lithuanian population connection with the country and the living environment

Run an effective diaspora policy



renkuosi
lietuva



IOM UN
MIGRATION

Two main government goals for diaspora:

1. Retain contacts with diaspora:

- Lithuanian World Community / Parliament
- Global Lithuania (MFA)
- Promotion of Lithuanian Sunday schools abroad (Ministry of Education)
- Global Lithuanian Leaders (Ministry of Economy)
- Global Regions (Association of Local Authorities)

2. Promote and assist return migration:

- Work in Lithuania
- Create for Lithuania
- Talents for Lithuania
- Back to LT
- Global regions
- **Migration information center (MIC)**



renkuosi
lietuva



IOM UN
MIGRATION

Migration information Center: **WHY** is it necessary

- Return can be (and is) more difficult than emigration
- Necessity to solve numerous issues simultaneously:
(job, housing, children education, welfare and healthcare issues, etc.)
- Information scattered among many institutions
- Information is in non-friendly bureaucratic language, long paragraphs of legislation
- No informal support mechanism as in emigration; no social networks of returned migrants



renkuosi
lietuva



IOM UN
MIGRATION

Migration Information Center: **WHAT** is it

One stop shop for all information related to return and living in Lithuania

Network

1. Relevant Lithuanian institutions
2. Regional coordinators (60)
3. Lithuanian communities abroad (46 countries / 192 communities)

Contributions

Possibility to contribute to various causes in Lithuania while being abroad through “Virtual Lithuanian” section

Information and Consultations

- Portal www.renkuosilietuva.lt
- Personal consultations:
 - Telephone, email, skype, Facebook, face-to face (office or events)
- Redirection to **specific** institutional contacts (*when matter is outside MIC competence*)
- Redirection to **specific** municipality coordinator (*on specific local matters*)

MIC service areas

Migration Information Center (MIC) „Renkuosi Lietuva“

- Information in various languages: LT; EN; RU
- Assistance on return planning; what first steps should be?
- Necessary documents to be brought home
- Assistance on problematic issues upon return:
 - *Social welfare; Healthcare; Education, children adaptation towards Lithuanian educational system; third country national family members integration questions.*
 - *Transfer of social benefits, pensions and work experience*
- Detailed information on regions
- Analysis, research, workshops

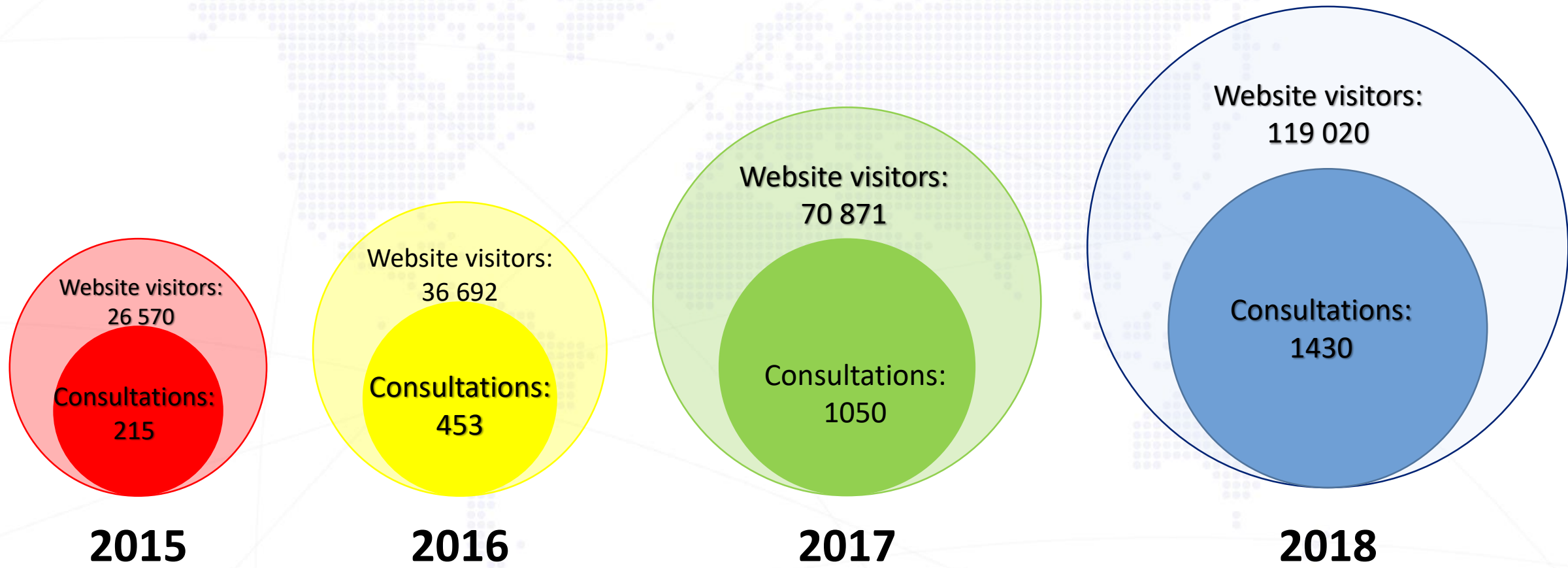


renkuosi
lietuva



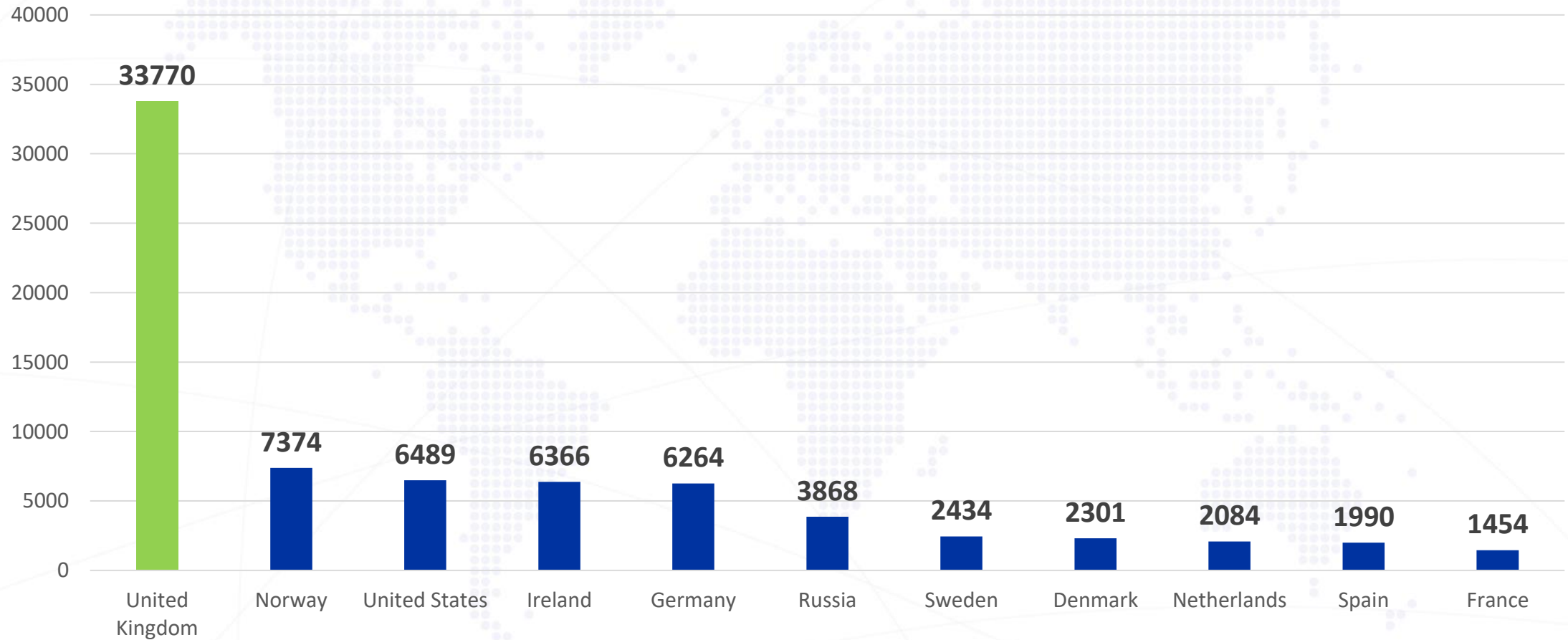
IOM UN
MIGRATION

Growth of MIC

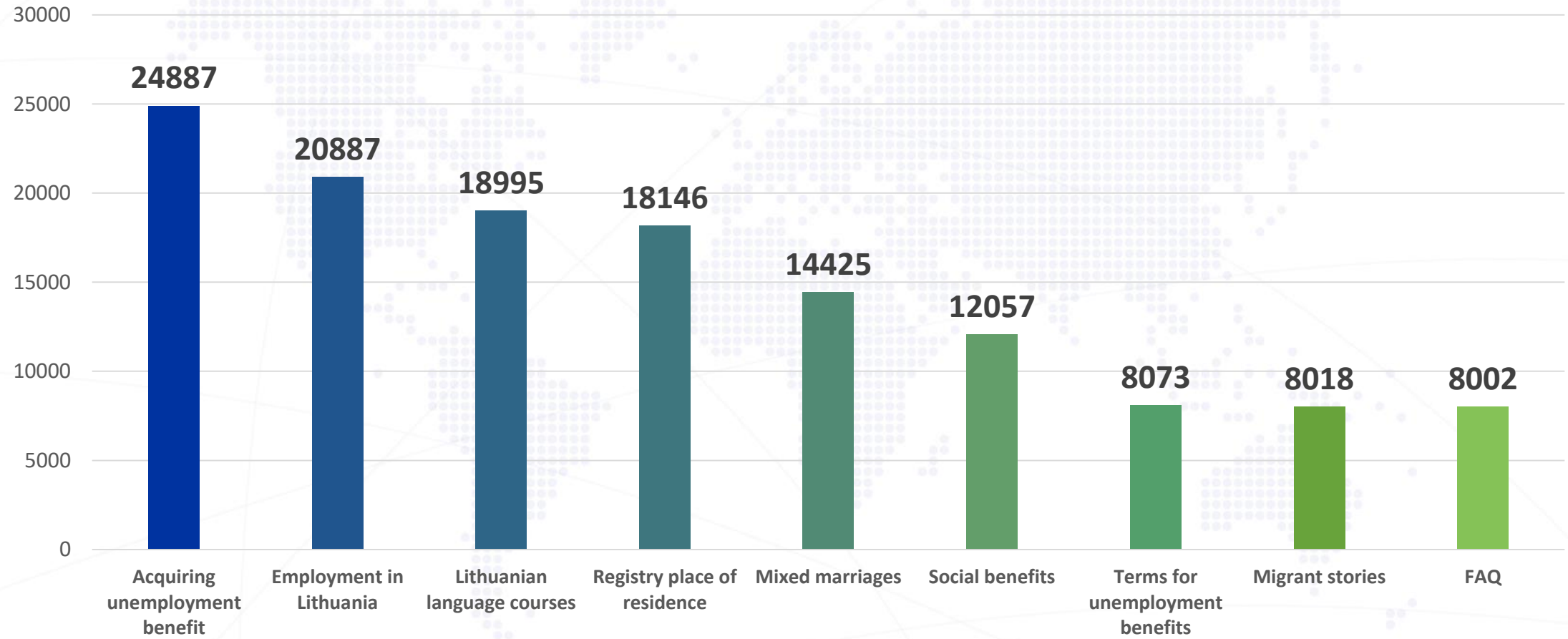


Website visitors by country (2015 – 2018)

Visitors from Lithuania: 170 038

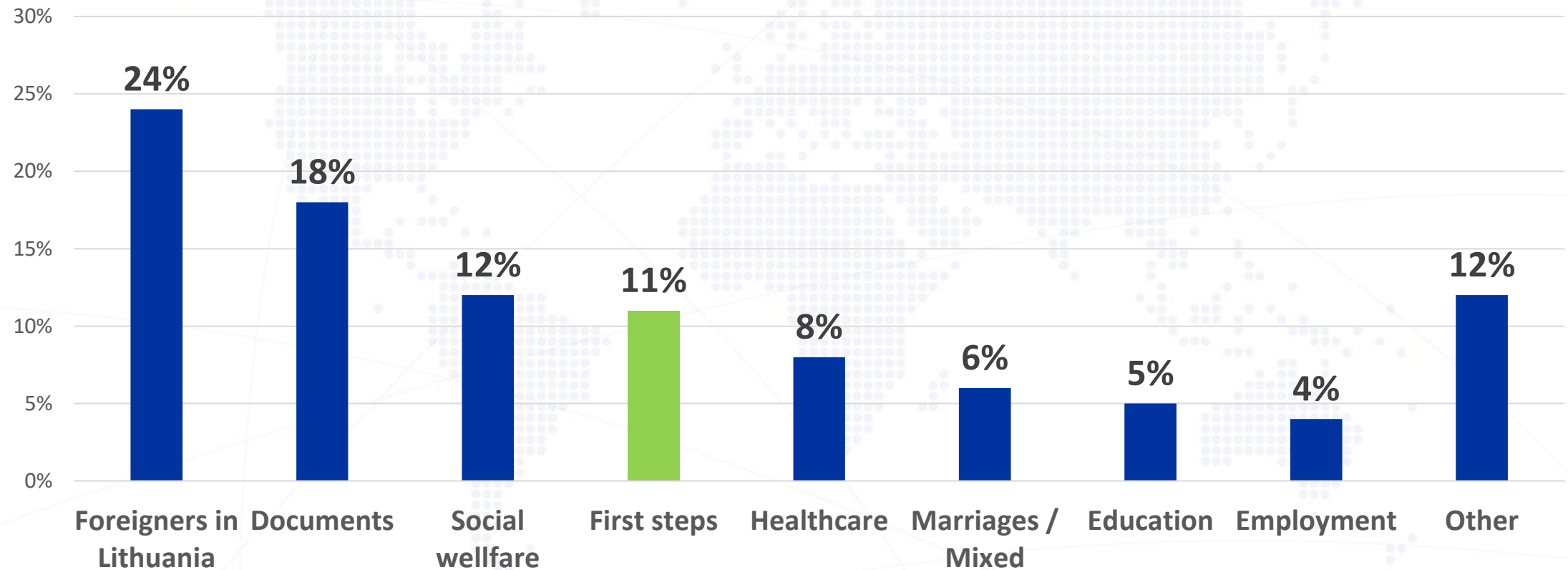


Most popular topics on the website



Most popular personal queries by category

Most important question: where do we start our return planning. What are the first steps?



MIC query analysis : what is being asked

- Need informational help on **preparation to return**:
 - Where to begin? What are the first steps?
 - Which documents and forms to acquire before return?
 - How to transfer job experience and other social benefits?
 - How to bring foreign family members?
- Help on encountering actual situations **while already in Lithuania**
 - **What to do, how to do**: job, housing, kids education, social benefits, healthcare etc.
- **Just to speak**, talk, vent things out (i.e. *psychological help is in high demand*)
- Various other claims:
 - **Lithuania owes me**
(requires services and benefits that does not belong: child allowances, social benefits, free education in foreign languages, free housing etc.)
 - **A cry of despair / help**
(came back, does not have any money, has no idea what to do)

All queries shows problematic areas, where help is the most necessary. By solving them, there is a chance to tame emigration.



renkuosi
lietuva



IOM UN
MIGRATION

Changing attitude to MIC

Emigrants and re-emigrants:

- **Decreasing skepticism and criticism:** from „*unnecessary, just a waste of money*“ (disbelief that can get quality information and services) to "need to advertise more and; there is actual help available„
- **Demand is growing**, a variety of questions / topics are expanding; questions become more complicated
- **Foreign nationals** / immigrants are increasingly turning for answers / help

Lithuanian nationals:

- Increasingly addressing on behalf of their relatives and friends abroad

Institutions:

- From “sure... you can give a try...” to really positive evaluation of work, desire to expand cooperation, consolidate the services of different institutions to avoid duplication,
- Turn MIC into national informational entry point to Lithuania

**Governmental
award
2017**



renkuosi
lietuva

**For providing best
consultations for
returning migrants**



LAZDŪNĖLĖ KONSULTAVANT
SUGRĮZTANČIUS

How to get in touch

- www.renkuosilietuva.lt
 - Lithuanian, English, Russian
- Email:
 - mic@iom.lt
- Social Media
 - Facebook, Twitter
- During events
- Toll-free info numbers:
 - 8-800-22-9-22 (Lithuania)
 - +44-8000-318-521 (UK)
 - +370-5-25-14352 (regular tariff)



renkuosi
lietuva



IOM UN
MIGRATION